



Annual Preceptor Workshop 2010

We welcome our dedicated OT & PT Preceptors
to this year's Preceptor Workshop!

This year we are pleased to present 2 valuable sessions:

**Compassion Fatigue
&
Strategies and Resources for Dealing with
Students Struggling in Clinical Education**

When: Thursday, May 20, 2010

Where: Courtyard by Marriott, Lancaster Room B,
1224 Upper James St., Hamilton

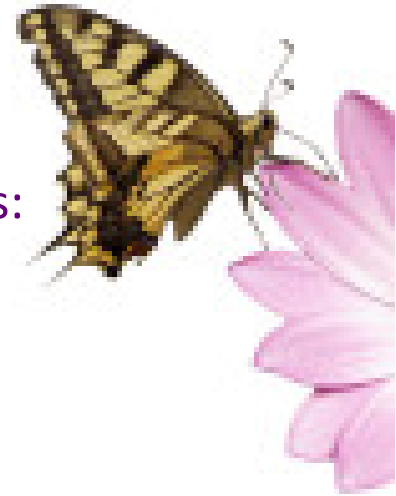
www.courtyardhamilton.com

Time: 1 – 4 pm (lunch provided 12 – 1)

Registration Deadline: April 30, 2010

[Click here](#) to complete the registration form for this free workshop

Scroll down for further details about the workshop sessions and facilitators...



The slide features a decorative border of pink flowers and a butterfly. A large pink flower is in the top left, and a yellow and black butterfly is in the top right. Pink flower petals are scattered along the top, bottom, and sides of the slide.

Annual Preceptor Workshop 2010

1:00 – 2:30 pm

***Compassion Fatigue:
A workshop designed for human services professionals.***

The goal of the workshop is to educate, validate, and support human services professionals regarding the causes, symptoms, and strategies for managing compassion fatigue and vicarious trauma. The key concepts include defining compassion fatigue, vicarious trauma, and the neurophysiological impact of trauma. Assessing for compassion fatigue involves recognizing signs and symptoms, contributing factors, life stressors, and current state of self-care and work/ life balance. Strategies for managing compassion fatigue more effectively include recognizing personal warning signs, scheduling to avoid overload, Low Impact Disclosure (LID), body awareness, stress reduction techniques, improved work/ life balance, and commitment to change.





Annual Preceptor Workshop 2010

1:00 – 2:30 pm (cont'd)

***Compassion Fatigue:
A workshop designed for human services professionals.***



Facilitated by Dr. Nathan J. Cooper, Psychologist



Nathan has a long time interest in college student development, substance use, pathological gambling and more recently positive psychology. Nathan completed his undergraduate education at Redeemer University College, graduate education at Central Michigan University and internship at the University of Michigan. Over the past seven years he has brought these interests and enthusiasm to the students and campus community at McMaster University. Outside of work Nathan enjoys basketball, cycling, hiking, and canoeing. And his joy is complete parenting five, lively children with his wife Carmen on a small hobby farm.



Annual Preceptor Workshop 2010

2:45 – 4:00 pm

*Strategies and Resources For Dealing with Students Struggling in Clinical Education**



Working with a student struggling in a placement and facing the decision to fail that student can be very stressful for everyone involved. This session will provide an opportunity for preceptors to understand key issues when student performance falls short of successful completion of a placement and will focus on a proactive and positive view of these challenges. Resources aimed at providing critical information and support will be shared and discussed through facilitated group activities.

*Adapted with permission from:

Strategies and Resources For Dealing with Students Struggling in Fieldwork. Mulholland S, Bossers A, Bédard A, Drynan D, Lauckner H, Barker D, Shimmell L, Moliner C, Boudreau ML, Storr C. Presented at 2009 CAOT National Conference (extended session).



Annual Preceptor Workshop 2010

2:45 – 4:00 pm

(cont'd)

Strategies and Resources For Dealing with Students Struggling in Clinical Education*



Facilitated by Lorie Shimmell, OT Professional Practice Coordinator & Bronwen Thomas, PT Academic Coordinator of Clinical Education

Lorie Shimmell, OT, PPC

Lorie is an Assistant Professor in the SRS. She is an occupational therapist with clinical experience in pediatric, mental health, general adult and federal corrections settings. She completed a Master of Science at McMaster University in 2006, studying guided storybuilding as a therapeutic process with children who experience occupational performance challenges. Lorie is OT Professional Practice Coordinator at SRS, and involved in research projects with the Canchild Centre for Childhood Disability Research.

Bronwen Thomas, PT, ACCE

Bronwen is a physiotherapist with clinical experience in a variety of practice settings working with older adults and clients diagnosed with Multiple Sclerosis (MS). She joined the School of Rehabilitation Science in 2007, where her primary role is as the Academic Coordinator of Clinical Education in the PT Program which includes the development and coordination of the clinical education component of the MSc(PT) curriculum.

